

Quick and easy to use

Print and take anytime

Stable system

High-speed printing

KF-UE-001 Cassette Laser Printer

Adopts UV laser printing technology, which can clearly print the information that users need on the surface of the cassette box, with a built-in touch screen, convenient operation interface, and powerful functions. KF-UE-001 is small and stable, with fast speed, supporting instant printing.



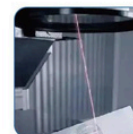
Product Features



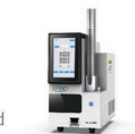
Strong software function
Simple to operate, drag-and-drop control interface, real-time preview of printed content, compatible with LIS/HIS/PIS



Easy to Use
Suitable for one-to-one printing mode when customers need to collect



High-speed Printing
20 cassettes/minute (print mode with barcode and text, from the time the laser prints to the time the slide reaches the collection slot), print and pick up as needed



High-stability system
Adopt LINUX system, safe and reliable, high-speed operation, support USB/network port/WIFI interface connection

Application Circumstance



Support offline independent printing, network printing

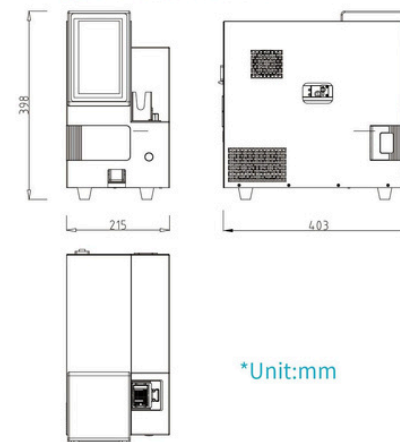


Supports linkage printing of pathology information system

Performance Index

Cassette Type	Any type
Upload Slot Capacity	1*75
Download Slot Capacity	Print and take anytime
Print Speed	3s / slide
Print Accuracy	2500 dpi
Connection Type	USB/network port/WIFI
Operation System	LINUX system (safe, reliable, fast, stable)
System Interface	Compatible with LIS/HIS/PIS
Operation Display	Built-in 7 inch touch screen, can be operated with medical gloves
KV	100V-240V 50/60Hz
Environment Temperature	10°C~35°C
Weight (net weight)	15kg
Dimension(LxWxH)	403x215x398 mm

Product Dimension



Contact Us

Tel/WhatsApp/Wechat: +86 186-7233-4799
Email: info@kfbio.cn
Web: kfbio-pathology.com

All the information in this material is for reference only, the company reserves all the rights, including updating and revision, sales representative shall be consulted on issues of parameter updating.

